



EXPANSE

LEARNING



Progression through **education** and **care**

ABOUT US

Expansive Learning believe that everyone, regardless of their current circumstances and starting point can achieve and make progress towards their goals and aspirations with the right package of education, work related learning and care provision.

Our team of specialist educators, health and care professionals provide quality education, personal care and medical support enabling students to undertake a personalised Study Programme.

Our programmes include;

- Pre-16 Independent Specialist School / Alternative Education Programmes
- Post 16 SEND Education 'Launchpad', including - Preparation for Adulthood, Work Skills Program, Work Experience Placement, Supported Internships.
- Personal Independence Programmes (PIP) (Launchpad PLUS)
- Specialist Support through additionalities
- Continuous Professional Development courses through 'Expansive on-line'

Additionalities:

Throughout Expansive Learning we also offer support in:

Travel Training, Social Inclusion, Medication, Personal Care, Speech and Language Therapy, Occupational Therapy, Assistive Technology, Accessibility, Sensory Diet, Specialist Support Integration and Information Advice and Guidance.

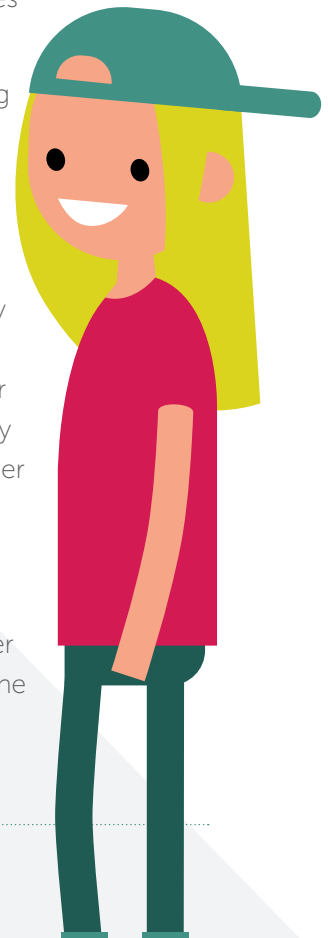
We offer expertise in meeting the needs of students with:

- acquired brain injury
- autism spectrum disorder with associated challenging behaviour
- profound and complex learning disabilities
- speech and language difficulties
- behavioural difficulties
- emotional difficulties
- mental health needs
- moderate learning difficulties
- epilepsy and/or associated neurological conditions
- or specific learning difficulties

The team at Expansive Learning are passionate about supporting young adults with Special Education Needs & Disabilities (SEND/SEMH) to achieve and progress.

Our programmes are funded by the Education & Skills Funding Agency and the Department for Education. We also work closely with and are funded by a number of Local Authorities.

For more information about us including the range of programmes & services we offer please read this brochure and the inserts provided.





Pre-16 Independent Specialist School

Expanse Learning operate an Independent Specialist Secondary School. Our school offers a small, personal and nurturing environment for young people aged 11-16 with Special Educational Needs & Disabilities or Social, Emotional Mental Health issues or those young people who have found a mainstream school environment a little overwhelming.

Our mission

Our students are central to all that we do. To enable our students to develop we have created a happy, safe and effective learning environment where everyone is valued. We offer students a broad, balanced, relevant and differentiated curriculum. By this we mean they will be introduced to a wide range of concepts, experiences, knowledge and skills at a level which is appropriate to each individual.

Our Curriculum

Our School curriculum is built around the themes of linguistics; mathematics; scientific; technological; human & social, physical and aesthetic & creative dimensions. In addition, our Personal, Social, Health & Citizenship Education helps to develop students from a spiritual, moral, social and cultural context, alongside developing positive behaviours, attitudes, attendance and engagement in learning.

We offer:

- GCSE'S in English and Maths
- Personalised learning and development
- Work related learning
- Residentials
- Vocational Qualifications
- PSHE

It is our aim to:

Provide a safe and happy environment within which all students have the opportunity to develop academically, personally, socially, physically, and spiritually and will undertake a wide range of learning experiences embedded within a challenging curriculum.

94% of parents/carers stated that they would recommend Expanse Learning

Our collective Values

In our School we all...

- Look after each other
- Enjoy our school
- Aim high
- Respect one another, ourselves and our environment
- Never stop learning

92% of students felt that their **confidence has improved** as a result of being with **Expanse Learning**



Post 16 SEND College Programmes

Expansive Learning are specialists in Preparing for Adulthood. The term “Preparing for Adulthood” is used to describe the process of moving from childhood into adulthood. Young people with Special Education Needs and Disabilities (SEND) should have equal life chances as they move into adulthood.

For students at Expansive Learning who choose to study at our Launchpad SEND Colleges, Study Programmes are personalised programmes of learning which help to increase their skills for employment and independent living, and are delivered via the student’s chosen vocational area at Expansive Learning.

Study Programmes consist of three key parts, the weighting of each part depends on the individual need of the student, and provides them with a personalised programme:

- Development of vocationally specific work skills with accreditation where appropriate
- Programme of work experience
- Development of English and maths / functional skills

Whilst building on existing skills, Study Programmes will stretch and challenge students to allow them to progress towards their intended outcomes.

Study Programme provide work experience opportunities as well as working on the basics such as English, maths and working with others to increase their confidence and employability.

Launchpad is made up of four separate pathways, the suitability of which to each student will depend on their individual needs, their identified EHCP outcomes and intended destination.

Post 16 Preparation for Adulthood

This programme creates effective, meaningful learning opportunities for young people to become more independent as they progress into adulthood.

Students develop their:

- Independence and health
- control over their environment
- social skills and communication skills
- community inclusiveness

They also learn effective and appropriate ways to express their aspirations. Launchpad staff employ a practical, hands-on approach to support students to learn essential daily living skills and develop work related learning skills that will facilitate their transition from college into the adult world.



94% of parents/carers stated that they would **recommend Expansive Learning**



Work Skills Programme

Our Work Skills programme is aimed at those who have had little or no experience of work or employment. It builds upon the key elements of the PFA programme but is weighted toward equipping students with a knowledge and understanding of the world of work.

This programme provides a variety of rich, meaningful learning opportunities. Students will learn new skills and build on their existing knowledge, become more independent, increase their confidence and apply these new skills in their lives after college.

Work Experience Programme

Our Work Experience programme is aimed at those who have had very little experience of work or employment or those who have progressed from the Workskills programme with an intention to move onto a Supported Internship. In this programme students:

- explore a range of work options, including vocational tasters and offsite work experience
- make an informed choice about their preferred vocational areas
- develop the necessary skills and experience and provide relevant offsite work placements.
- Are able to gain Accredited qualifications from Edexcel Qualification in Work skills from Pearson skilled for life framework.

Supported Internship

We provide a structured Supported Internship programme that is based primarily within the workplace. This programme enables young people aged 16-24 to achieve sustainable paid employment by equipping them with the skills they need to work, through learning in the workplace. Alongside their time at the employer, a young person will complete a personalised study programme which will include working towards the four key areas of Preparing for Adulthood Health, Community Inclusion, Independent Living and Employability. Each young person will also study for relevant substantial qualifications, in English and Maths.

90% of students stated that attending Expanse Learnings programmes is a **positive and enjoyable experience.**

100% of parents/carers stated that Expanse Learning **responds effectively to any raised concerns**





All students have an individual timetable that reflect planned activities to support the achievement of long term goals and reflective of their individual preferences. Some students have clear ideas about what they like to do, others need to explore options through first-hand experience.

We will agree short and long terms outcomes to support the progress of the young person.

in meeting their educational and career aspirations. These steps support and enable students to achieve their EHCP outcomes:

- **Education and or Employment** - including exploring different employment options, such as support for becoming self-employed and help from supported employment agencies.

Enrichment activities and residential trip

Expansive Learning offers a rich and full Enrichment opportunities for all students. They broaden the experience of all the students and add variety, challenge and fun to the curriculum. Students can choose from a range of activities, workshops and events which are integrated within their curriculum. Activities vary and are planned to reflect student's needs. Sessions are led by staff with working with a range of external partners and include:

- Photography / Film Club / Video Games Club
- Arts and Crafts / Enterprise
- Sports and Leisure / Gym / Swimming / Football
- Outdoor Education / Canoeing & Kayaking / Scuba & Snorkelling
- Charity Focused events
- Trips to places of interest / Shopping and City visits
- Social Events including Cinema, bowling, disco nights
- Club Atmosphere Inclusive Night Club (18yrs and over only)

- **Independent Living** - this means young people have choice, control and freedom over their lives and the support they have, their accommodation and living arrangements, including supported living.

100% of employers stated that Expansive Learning adds **value to their organisation!**

- **Participating in society** - including having friends and supportive relationships, and participating in, and contributing to, the local community.

- **Being as healthy as possible in adult life** - ensuring access to the right health professionals who understand the young person's learning difficulties and disabilities.

Expansive Learning offer students the opportunity to take part in residential breaks. We work in partnership with the Calvert Trust who provide a residential break and activities that ensures individuals are fully supported in a safe environment. Calvert Trust has adapted equipment and experienced staff in a fantastic location - the Lake District National Park. By focusing on challenging disability through outdoor adventure, our residential breaks are not just about fun, it's an additional opportunity for students to develop personal skills that can be taken into everyday life, including:

92% of students felt that their **confidence has improved** as a result of being with **Expansive Learning**

- Building self-confidence
- Gaining independence
- Making new friends
- Acquiring new hobbies and skills.

Expansive also offer a range of day trip and short breaks across the UK.



And Beyond Launchpad Plus

At Expanse we provide a bespoke service supporting young people and adults with additional needs/disabilities. By specialising in working with a precise age group we can deliver age appropriate education, life skills and socially inclusive activities through a structured timetable. Keeping our timetable consistent helps with familiarity and routine.

We strive to support the young adults that we care for and work with, to achieve their full potential in life and to become as independent as they can, regardless of how complex their needs/disabilities may be.

What we do at Launchpad PLUS (PIP)

Our teams work directly with the young people to plan and organise activities, trips and social activities, these include:

- Trips and Visits to places of interest
- Cinema and Theatre trips
- Shopping and eating out
- Residential & Short breaks
- Water based & Boat trips
- Horse & Trap Riding
- Swimming, Gym and fitness activities
- Cookery, Baking and Arts activities
- Digital Workshops – Photography, Music and Film making.

All young adults are individuals and it is important for us to meet personal requirements.

We offer learning through relaxed skills development sessions, offering various accredited and non-accredited courses, physical activities, life skills, cookery, work experience and healthy living.



100% of employers stated that Expanse Learning works well with their organisation to ensure we **offer meaningful work experience!**

WHAT OUR LEARNERS & PARENTS SAY, "My child has come a really long way through Launchpad, we are so proud of their progress."



ExpansE Learning Leigh

The Stadium
Sale way
Leigh Sports Village
Leigh
WN7 4JT
Tel: 01942 877 715
Email: hello@expansElearning.co.uk

ExpansE Learning Wigan

Tyrer Avenue
Wigan
WN3 5XF
Tel: 01942 488252
Email: hello@expansElearning.co.uk
School Registration Number: 359/6003

ExpansE Learning Warrington

Beauford St
Warrington
WA5 1BA
Email: hello@expansElearning.co.uk

www.expansElearning.co.uk

Follow us:

Facebook: @ExpansElearningUK

Instagram: @expansElearning

Twitter: @ExpLearningHub

LinkedIn: @expansE-group-ltd

