

Outreach, Engagement and Achievement



The Outreach, Engagement and Achievement Programme (OEA Programme) is a pathway of additional support for Expanse Learning Wigan School students who, for a period of time, are not attending the main school site for a number of reasons.

The pathway caters for individual needs and students can progress through the categories with an aim to be back on the main school site for their full-time education. This service was set up to support students (and their families) who show emotionally based school avoidance (EBSA) or who are not yet 'classroom ready'.

Delivery

The OEA Programme is delivered by an experienced teacher supported by other skilled members of staff. It is overseen by a member of the Senior Leadership Team through regular support meetings. Students are taught through a variety of methods depending on their needs. Some people may be taught at home; in the community on a 1-to-1/small group basis or in a school in smaller groups with a view to reengagement with the main school.

Curriculum

The curriculum for students on the pathway is bespoke and designed to meet the student's academic ability and personal interests.

The work delivered on the OEA programme is planned, supported and assessed by the subject specialist teachers and is designed to mirror the work being delivered in the school to enable students to move between pathways and to reintegrate into the school when appropriate.

The 5 main components on the OEA programme are:

School-based

Students complete a phased return to school. They can join in classes at school for specific subjects/qualifications. They may access suitable vocational courses on/off site if appropriate.

Hybrid with school

This group of students attend the school but are taught in a separate classroom by OEA staff on a 1 to 1 or 2 to 1 basis. They can access specific subjects to achieve qualifications. They may access suitable vocational courses on/off site if appropriate.

Engage at base

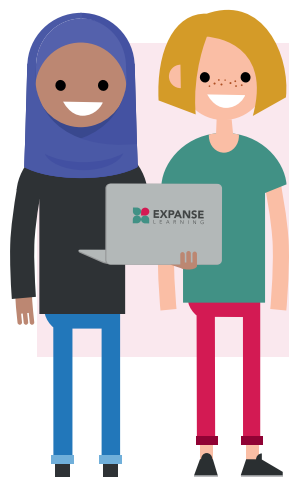
Small groups of students attend an off-site provision which is managed by Expanse staff. Many of the students have emotionally based school avoidance. The base aims to create a small school environment to engage students in a school setting. There is an opportunity to access vocational lessons on the main site.

Outreach education






Students are taught by staff at home or in agreed centres within the community. If appropriate, some of the students may also attend a vocational placement one day a week.

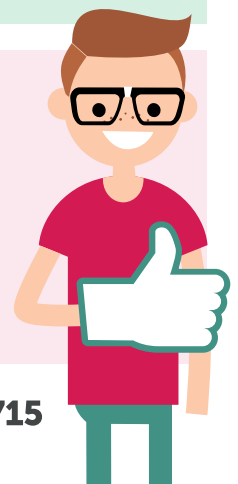
Pastoral support

Students who are currently not engaged in academic education can receive pastoral home visits with an aim to them moving quickly onto the outreach education programme. Staff work closely with families and outside agencies to provide support for students and families.



Outcomes

-  Improvement in attendance and engagement.
-  Families feel supported.
-  Positive relationships.
-  Positive Academic Progression.
-  Improved Communication and interaction skills.



Further information: **Expanse School Wigan** on **01942 877715**